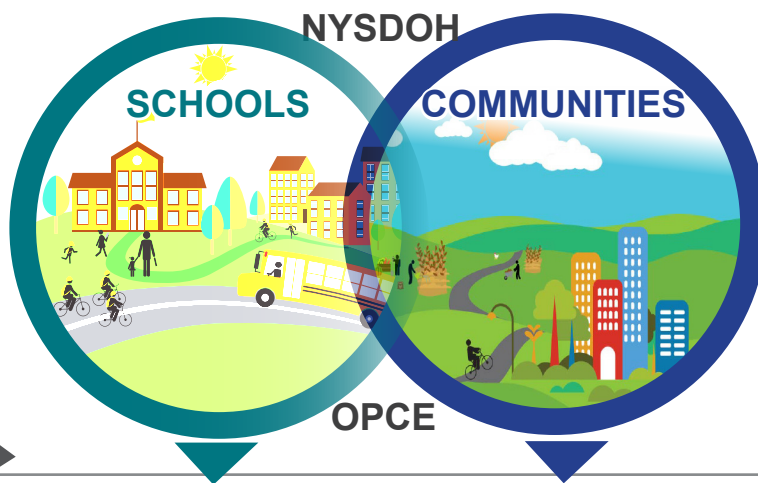




# Creating Healthy Schools and Communities

## 1 INITIATIVE

**Creating Healthy Schools and Communities (CHSC)** is a five-year (2015-2020) public health initiative to reduce major risk factors of obesity, diabetes, and other chronic diseases in 85 high-need school districts and associated communities statewide. The **New York State Department of Health (NYSDOH)** has funded local organizations and county health departments. The goal is to implement multi-component evidence-based policies, place-based strategies, and promising practices to increase demand for and access to healthy, affordable foods and opportunities for daily physical activity for all New Yorkers. The **Obesity Prevention Center for Excellence (OPCE)**, led by **JSI Research & Training Institute, Inc. (JSI)** strengthens the CHSC Initiative's collective impact by providing technical assistance, training, resources, and a network to collaborate.



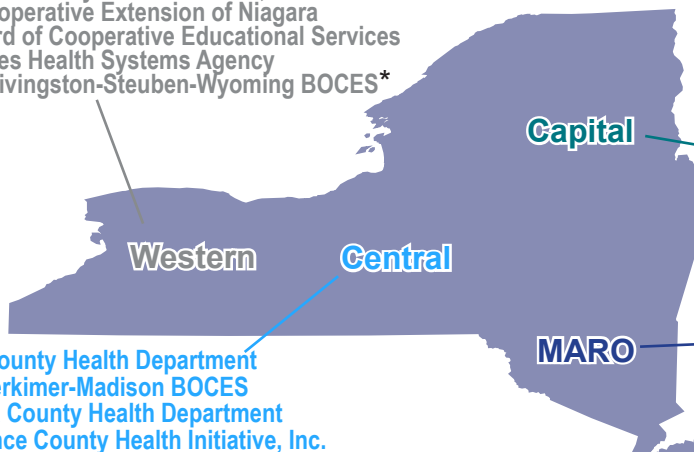
## 7 STRATEGIES

1. Revise, implement, and assess **local wellness policies** to improve the school environment.
2. Establish **Comprehensive School Physical Activity Programs (CSPAP)**.
3. Increase access to **healthy, affordable foods** and increase school districts' ability to meet federal **nutrition standards** for foods sold outside of school meals.
4. Restrict **food marketing** to children.
5. Increase access to **healthy, affordable foods** in communities.
6. Increase adoption and use of **food standards and procurement policies that increase healthy foods** in community sites and settings.
7. Adopt and implement Complete Streets policies, plans, and practices to increase access to **opportunities to walk, bike, and roll**.

## 26 GRANTEES

Chautauqua County Health Network, Inc.  
 Cornell Cooperative Extension of Niagara  
 Erie 1 Board of Cooperative Educational Services  
 Finger Lakes Health Systems Agency  
 Genesee-Livingston-Steuben-Wyoming BOCES\*

With grant funding, JSI<sup>^</sup> and its partners (Alliance for a Healthier Generation, PedNet, University of Rochester, and Sasaki Associates) support the 25 grantees and their partners in CHSC efforts.  
 Visit OPCE online at: [www.nyopce.com](http://www.nyopce.com)



Broome County Health Department  
 Oneida-Herkimer-Madison BOCES  
 Onondaga County Health Department  
 St. Lawrence County Health Initiative, Inc.

Clinton County Health Department  
 Capital Roots  
 Glens Falls Hospital  
 North County Healthy Heart Network, Inc.  
 Research Foundation for SUNY Cobleskill  
 Seton Health Foundation

Cornell Cooperative Extension of Sullivan County  
 Nepperhan Community Center, Inc.  
 County of Orange  
 Rockland County Department of Health  
 Western Suffolk BOCES\*

Fund for Public Health in New York, Inc.\* **NY City**  
 The Institute for Family Health

\*Organization has multiple grants  
<sup>^</sup> JSI is one of the 26 grantees